



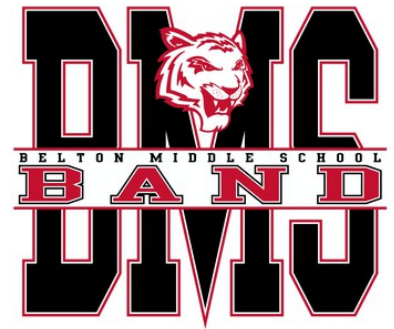
# Band Notes - Week of August 25

2025-2026 School Year - Belton MS Band

## Welcome!

General information that applies to all students and parents can be found towards the **top** of every newsletter, while information specific to your child's ensemble can be found in that particular section by **scrolling all the way down**.

Feel free to contact a director if you have any questions and our contact information is at the bottom of this newsletter. Thanks for reading!



## General Information for All

Event Information

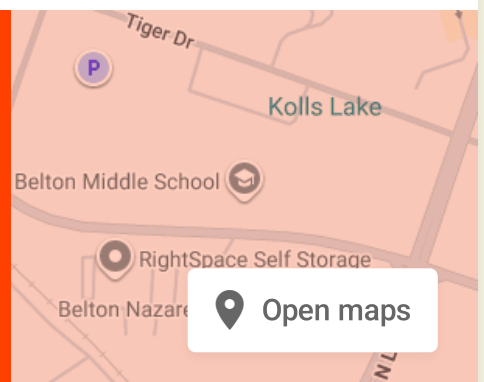
**Instaraise Fundraiser Starts**

When?

**Monday, Sep 8, 2025, 08:00 AM**

Where?

**Belton Middle School, Sparta Road, Belton, TX, USA**



---

## List of Band Events

[Please click here to see all of the Band Events](#) for this new school year in order to plan your family's activities. Remember, performances are a required part of our curriculum, so please contact a director ASAP for any conflicts.



---

### Event Information

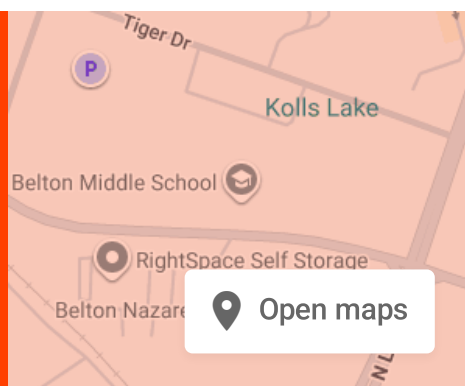
**All Payments Due (for shirts, instruments, & decals)**

When?

**Friday, Sep 12, 2025, 04:00 PM**

Where?

**Belton Middle School, Sparta Road, Belton, TX, USA**



---

## Private Lessons Are AWESOME!!!

Lessons are the **fastest** way students improve on their instrument because they have a quality teacher guiding them in their development of proper tone, rhythm, articulation, and musicality. Students enrolled in lessons usually earn first division superior ratings, make the All-Region Band, the have more fun learning their instrument because they sound **better**, faster.

[Please read this document](#) *before* deciding whether or not to sign up for lessons since it outlines the benefits of taking lessons **that occur during your child's band class!** If you have any questions about lessons, [please email Mr. Trahan here](#).

Check out our [list of quality lessons teachers by clicking here](#), AND [sign Up for Private Lessons here!](#)



### Benefits of Private Lessons.pdf

Please read this document BEFORE deciding whether or not to sign up for private lessons.

**Download**  
523.1 KB



### District Cell Phone Guidelines - HB 1481.pdf

Recently passed state law regarding personal electronic devices for Belton ISD

[Download](#)

600.5 KB



### Our CutTime Program

CutTime is a program we use that allows you to **stay informed** without login hassles and **get reminded** without inbox clutter. Be

on the lookout for a text message from CutTime from **844-385-8463**. The message will come to your mobile device phone number we have on file for you (and your student) via a "Magic Link", which is a uniquely personalized to you and secure.

**Read the attachment below for instructions** on how to add your Magic Link to your smartphone's home screen. Once you receive the message, you will gain access to your CutTime Portal Page where you can:

- View Announcements
- View and Subscribe to Events that involve you and your student
- View and Sign Up for Volunteer Opportunities within these events
- Check Account Balances

If we don't have your contact information, [please fill out this Contact Information Update Form](#) ASAP. If you missed or can't find your CutTime Magic Link, [go to this link to resend it to your device](#) on file.

Feel free to take 3 minutes to [watch this introduction video](#) and see what's in store, and feel free to send us a message if you have any other questions or feedback.



## CHAPERONES NEEDED!

### Parent Chaperone Sign-Up

Click on this link to sign up to become a district volunteer and complete the background check. Even if you have done this before, this process must be repeated every school year: [Parent Chaperone Sign-Up](#). Please sign up for volunteer opportunities on your [CutTime MagicLink](#).

### Check Out Our Socials!

We want to interact with you on social media, so be sure to **Like, Follow, and Subscribe** on all of the following platforms you use:

- [YouTube Channel](#)
- [Parent Square Group](#)
- [Facebook Page](#)
- [Instagram Account](#)
- [Band Website](#)
- [Google Photos Album](#)
- [SoundCloud Channel](#)
- [Smore Newsletters](#)



THE TEACHER PROVIDES:



THE STUDENT PRODUCES:



### Teacher & Student Shared Responsibilities

In the Belton MS Band, we form a partnership between teacher and student where *both* share responsibility in their musical development. Our team of teachers include middle school directors, private lesson instructors, high school directors, and even hired clinicians, masterclass teachers, and adjudicators. We also strive to communicate and produce strong partnerships with parents since their support is vital in their student's growth.

To that end, we as the teaching team provide Introduction, Comprehension, and Demonstration to students for their instruction. However, each student has a responsibility as well to facilitate Repetition in the form of practicing daily for at least 25 minutes, 5 days per week.

This means that **instruments go home everyday** to practice the concepts, patterns, and music that we go over daily in class. This leads to student Mastery of their music and ultimately of their

instrument. Students have homework everyday in Band as they practice their instrument in preparation for performances and to continue their musical growth. Reach out to a director if you would like more information on how to better help and support the musical growth of your student.

---

## Band Calendar

[Click here to see the Calendar page of our website](#) to find **all** of the current events, including special rehearsals, contests, and performances for the whole school year. We provide this so you can plan your family's activities. Remember, performances are a required part of our curriculum, so please contact a director ASAP for any conflicts. Be sure to view the [List of Band Events](#) that can be found clicking on the link.

---

---



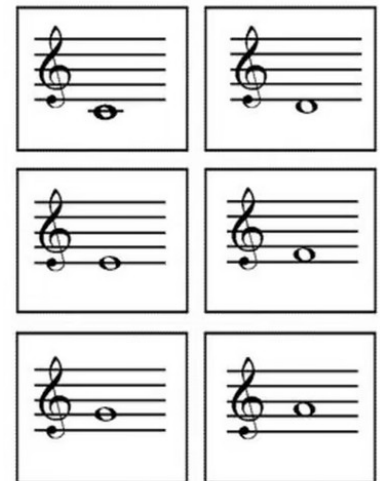
## Beginner's Ensemble

### Study Flashcards for Two Tests This Week!

All Beginners should be studying their flashcards daily in order to "Be Prepared" for both of their Flashcards Tests this week. One test contains the 6 cards of the lines of their staff, and the other contains the 6 cards of the spaces of their staff. **All music binders should go home and be brought back to school everyday in order to practice this at home daily.**

In order to move forward in class, students must pass-off each set of 6 cards in 8 seconds or less. Practice with your student at home so we can keep moving forward in learning the parts of the instrument, followed by opening the case!

---



**Keep Practicing the Staff Chant from the Recording Below!**

#### Event Information

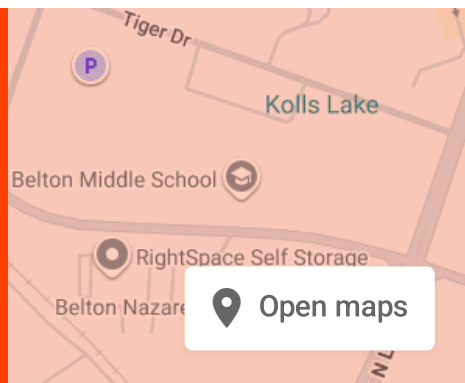
### First Beginner Sit-In Concert

When?

**Thursday, Oct 16, 2025, 06:30 PM**

Where?

**Belton Middle School, Sparta Road, Belton, TX, USA**



## Symphonic Band

### After School Sectionals Start THIS WEEK!

Sectionals will start on Monday, August 25 until Friday, November 7 one day after school per week from 4:00-5:00pm. All students in both Symphonic Band and Wind Ensemble are required to attend one sectional per week from 4:00-5:00pm for a weekly grade.



#### Mondays

- **Flutes** in Ensemble Room with Trahan

#### Tuesdays

- **Clarinets** in Ensemble Room with Trahan
- **Tubas** in Band Hall with Pulley

#### Wednesdays

- **All Saxophones** in Ensemble Room with Trahan
- **Percussion** in the Band Hall with Smith
- **Horns** in the Orchestra Room with Pulley

#### Thursdays

- **Trumpets, Trombones, & Euphoniums** in Band Hall with Pulley

**Oboe, Bassoon, & Bass Clarinet:** During regular class with a director - nothing after school required

Students are expected to "Be Punctual" and arrive seated with all materials and ready to rehearse at 4pm sharp or their grade will be affected. Students 1-5 minutes late will have their sectional grade reduced to an 85. Students who are late 5-15 minutes will have their grade reduced to a 70. Students arriving more than 15 minutes late will receive a 50.

---

---

## Wind Ensemble

### After School Sectionals Start THIS WEEK!

Sectionals will start on Monday, August 25 until Friday, November 7 one day after school per week from 4:00-5:00pm. All students in both Symphonic Band and Wind Ensemble are required to attend one sectional per week from 4:00-5:00pm for a weekly grade.



#### Mondays

- **Flutes** in Ensemble Room with Trahan

#### Tuesdays

- **Clarinets** in Ensemble Room with Trahan
- **Tubas** in Band Hall with Pulley

#### Wednesdays

- **All Saxophones** in Ensemble Room with Trahan
- **Percussion** in the Band Hall with Smith
- **Horns** in the Orchestra Room with Pulley

#### Thursdays

- **Trumpets, Trombones, & Euphoniums** in Band Hall with Pulley

**Oboe, Bassoon, & Bass Clarinet:** During regular class with a director - nothing after school required

Students are expected to "Be Punctual" and arrive seated with all materials and ready to rehearse at 4pm sharp or their grade will be affected. Students 1-5 minutes late will have their sectional grade reduced to an 85. Students who are late 5-15 minutes will have their grade reduced to a 70. Students arriving more than 15 minutes late will receive a 50.

---

---

## Jazz Band

Practice Red Book Lines & Rhythm Warm-Ups Daily to  
Learn Proper Articulation!

---

---

## Band Meme of the Week

---

---

## About the Directors



### Mr. Pulley

- Director of Bands
- Wind Ensemble
- Jazz Band
- Brass Specialist (trumpet, horn, trombone, euphonium, & tuba)
- [chris.pulley@bisd.net](mailto:chris.pulley@bisd.net)



### Mr. Trahan

- Assistant Band Director
- Symphonic Band
- Woodwind Specialist (flute, oboe, bassoon, clarinet, & saxophone)
- [patrick.trahan@bisd.net](mailto:patrick.trahan@bisd.net)



### Mr. Smith

- Assistant Band Director
- Percussion Specialist (keyboards, drums, & accessories)
- [ian.smith@bisd.net](mailto:ian.smith@bisd.net)

---

## Contact Us



Email: [beltonmsband@gmail.com](mailto:beltonmsband@gmail.com)

Website: [beltonmsband.org](http://beltonmsband.org)

Call/Text: [254-262-3050](tel:254-262-3050)

Address: [1704 Sparta Road, Belton, TX, USA](https://www.google.com/maps/place/1704+Sparta+Road,+Belton,+TX,+USA)

---

Facebook: [facebook.com/beltonmsband](https://www.facebook.com/beltonmsband)

YouTube: [youtube.com/beltonmsband](https://www.youtube.com/beltonmsband)

Instagram: [instagram.com/beltonmsband](https://www.instagram.com/beltonmsband)



## Belton MS Band

[beltonmsband.org](http://beltonmsband.org)

Contact

Subscribe



This is for the Belton Middle School Band (Belton ISD) in Belton, Texas.